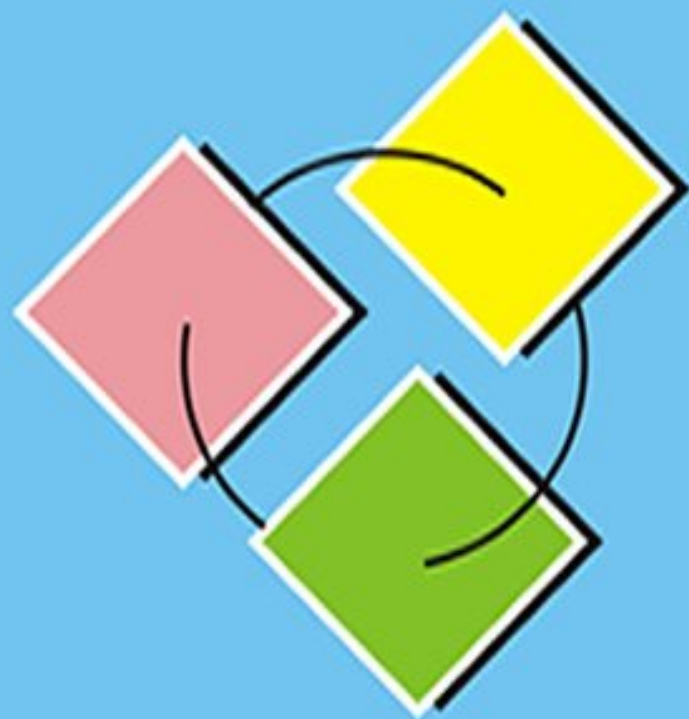




Multiplex
cum
Shopping Mall



Vinayak City Centre

ALLAHABAD

MULTIPLEX CUM SHOPPING MALL

Welcome to the world class arena,



Mall, which has a potential neighborhood of more than 5 lacs people with high disposable income. Located in centre of high class Civil Lines on Sardar Patel Marg at Allahabad.

Setting standards with its ambience and infrastructure

Vinayak City Centre

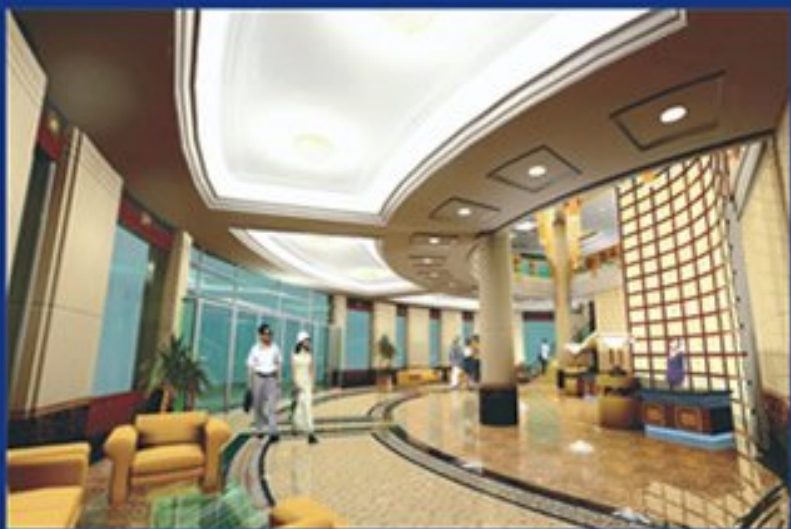
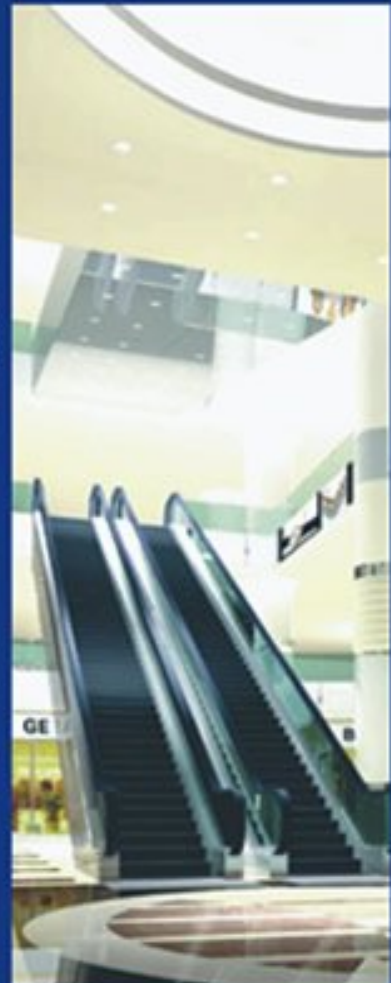
AN UPCOMING COMMERCIAL MARVEL, MADE UP OF THREE FLOORS of shopping with cinema and basement designed with enriched specification and modern amenities, conforms to the highest standards. It will emerge up as a happening place with - Multiplex Shopping Area, Pubs, Restaurant, Food Courts, PVR Cinema and an event stage. Conceivable needs has been identified and taken care of to offer the retailers a perfect place to market their brands. It is destined to become a hot spot, offering everything leisure, fun, entertainment and shopping whatever a family seeks in a mega mall. It is going to be the ultimate destination for all those who believe in living city life in style.

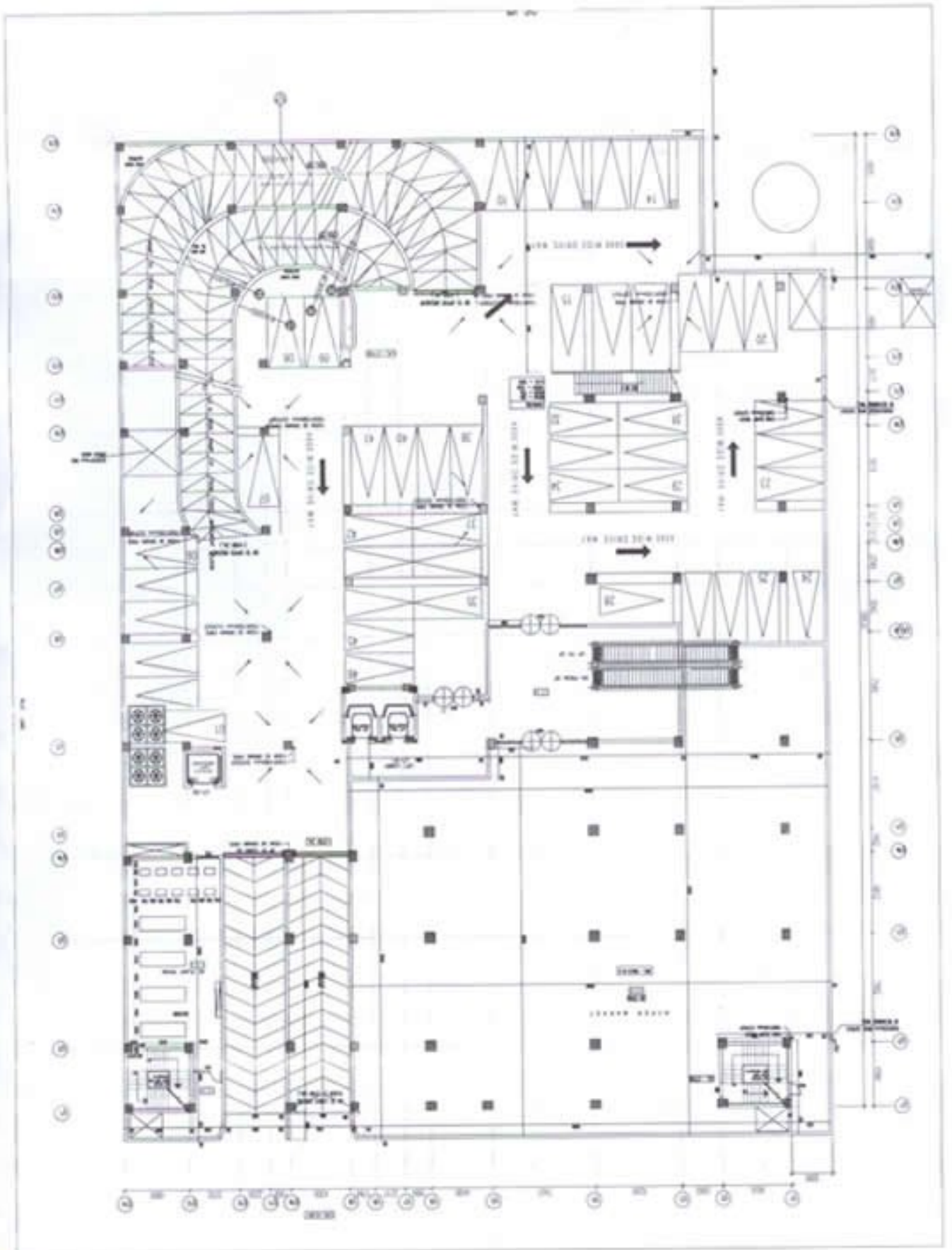




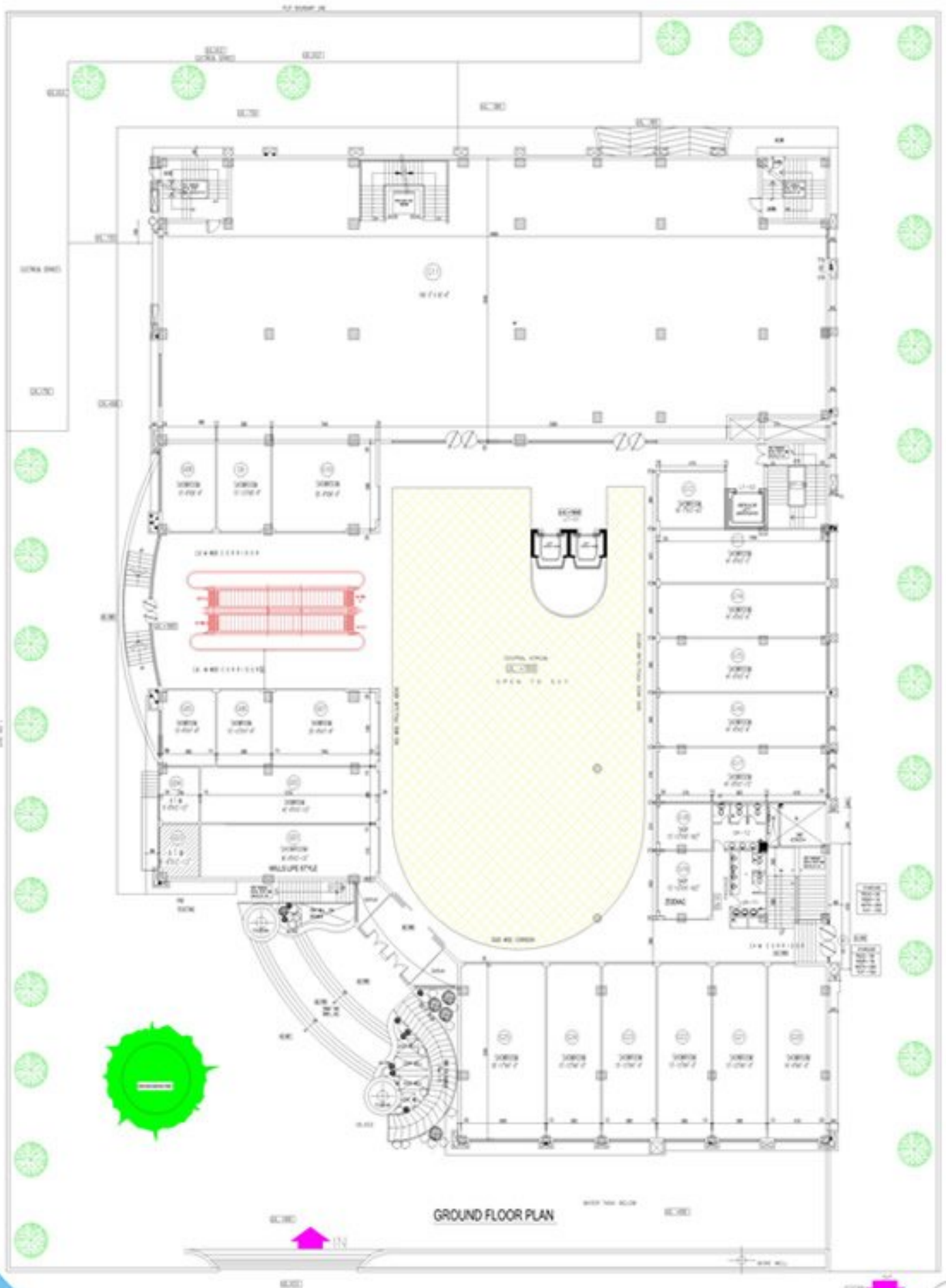
The Main Features of *Vinayak City Centre*

- *Fashions Boutiques.*
- *Brand Outlets.*
- *Hyper Market.*
- *Food Court.*
- *Specialty Restaurants.*
- *Ice Cream Parlours.*
- *Ultra Modern Shops.*
- *Departmental Stores.*
- *Life Style Products.*
- *Jewellery Shops.*
- *Video Parlours.*
- *4 mega screens PVR multiplex with 1000 seats.*
- *Located in high purchasing power's area.*
- *Fully Air Conditioned Complex.*
- *Capsule Elevators.*
- *High Speed Escalator.*
- *Ample Car parking space.*
- *Modern Fire fighting systems.*
- *Grand Entrance opening*
- *High Class Modern Security System.*

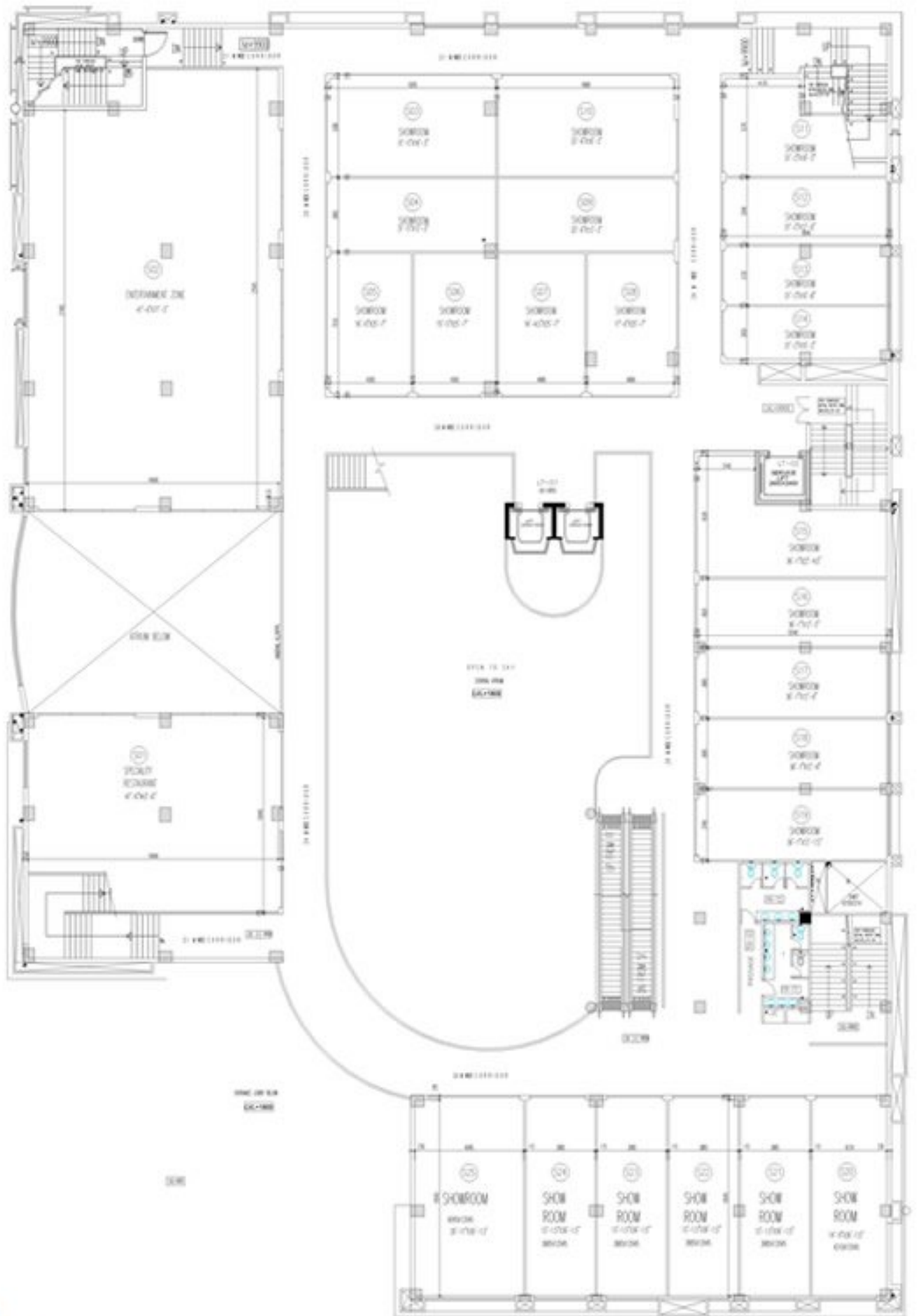




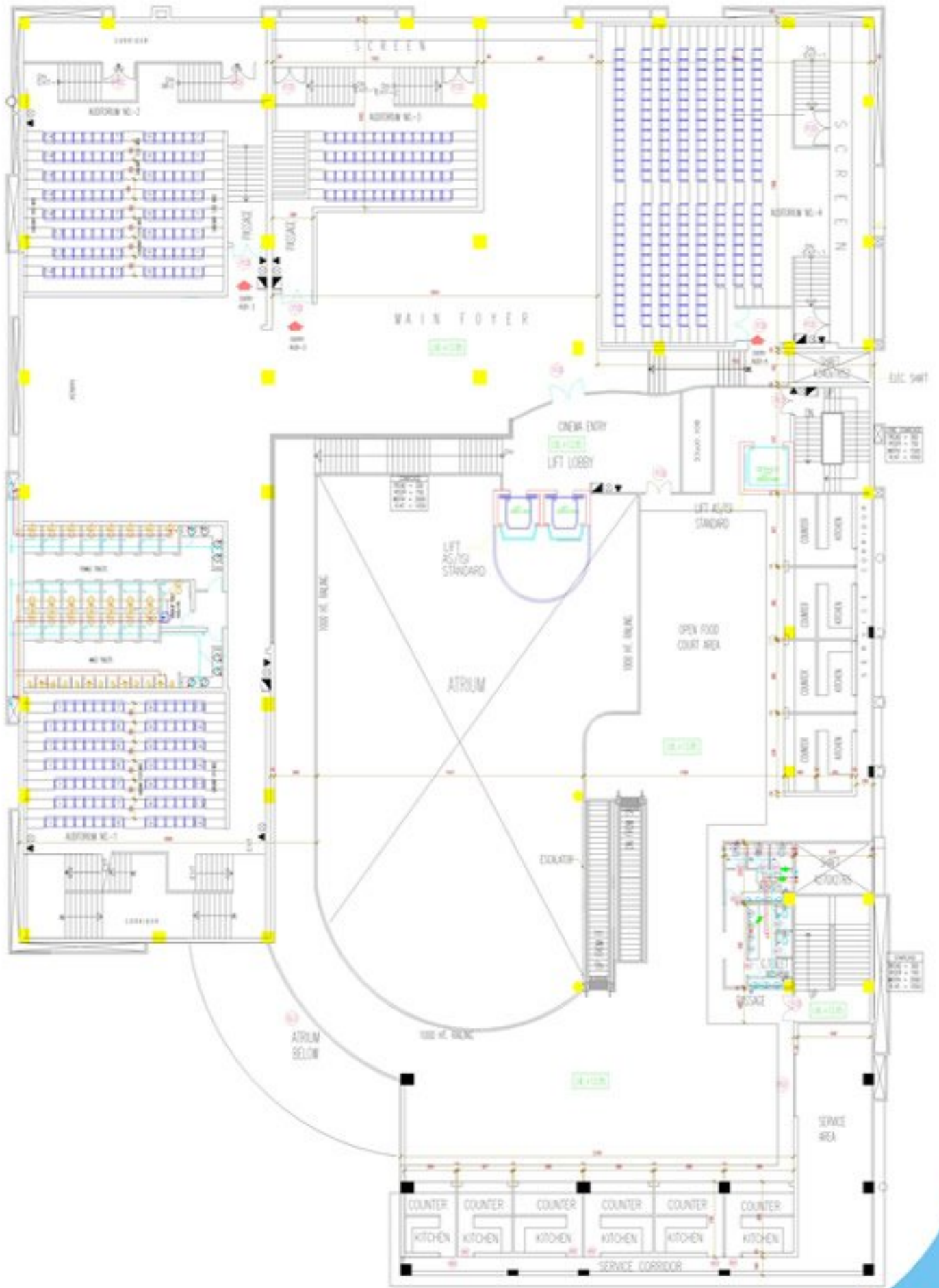
LOWER GROUND FLOOR PLAN



GROUND FLOOR PLAN



SECOND FLOOR PLAN



THIRD FLOOR PLAN

STATEMENT OF AREA

GROUND FLOOR

Shop No.	Builtup Area (Sq. Ft.)	Chargable area
GF-01	579.69	891.83
GF-02	587.71	904.17
GF-03	139.73	214.96
GF-04	139.73	214.96
GF-05	263.49	405.37
GF-06	242.19	372.60
GF-07	468.68	721.05
GF-08	315.78	485.82
GF-09	290.25	446.54
GF-10	573.78	882.74
GF-11	10,726.63	12,871.95
GF-12	242.21	372.63
GF-13	534.40	822.15
GF-14	537.53	826.97
GF-15	537.53	826.97
GF-16	537.53	826.97
GF-17	542.75	835.00
GF-18	225.00	346.15
GF-19	221.91	341.40
GF-20	654.95	1,007.62
GF-21	563.63	867.12
GF-22	563.63	867.12
GF-23	563.63	867.12
GF-24	1,444.55	2,222.38

FIRST FLOOR

Shop No.	Builtup Area (Sq. Ft.)	Chargable area
FF-01	684.55	1,053.15
FF-02	657.41	1,011.40
FF-03	376.92	579.88
FF-04	242.19	372.60
FF-05	263.49	405.37
FF-06	315.78	485.82
FF-07	298.05	458.54
FF-08	467.03	718.51
FF-09	10,726.63	12,871.96
FF-10	163.88	252.12
FF-11	473.16	727.94
FF-12	473.16	727.94
FF-13	473.16	727.94
FF-14	473.16	727.94
FF-15	482.34	742.06
FF-16	98.11	150.94
FF-17	137.53	211.58
FF-18	576.52	886.95
FF-19	500.72	770.34
FF-20	500.72	770.34
FF-21	500.72	770.34
FF-22	500.72	770.34
FF-23	806.30	1,240.46

SECOND FLOOR

Shop No.	Builtup Area (Sq. Ft.)	Chargable area
SF-01	2,133.42	3,282.18
SF-02	3,835.30	5,900.46
SF-03	584.95	899.92
SF-04	431.75	664.23
SF-05	415.82	639.72
SF-06	407.79	627.37
SF-07	433.48	666.89
SF-08	441.50	679.23
SF-09	459.00	706.15
SF-10	621.87	956.72
SF-11	522.66	804.09
SF-12	396.00	609.23
SF-13	356.00	547.69
SF-14	358.00	550.77
SF-15	637.00	980.00
SF-16	463.97	713.80
SF-17	473.16	727.94
SF-18	473.16	727.94
SF-19	478.00	735.38
SF-20	576.52	886.95
SF-21	500.72	770.34
SF-22	500.72	770.34
SF-23	500.72	770.34
SF-24	500.72	770.34
SF-25	806.30	1240.46

